

MP130 manometer with sealing kit for gas network



Key description of MP130 manometer



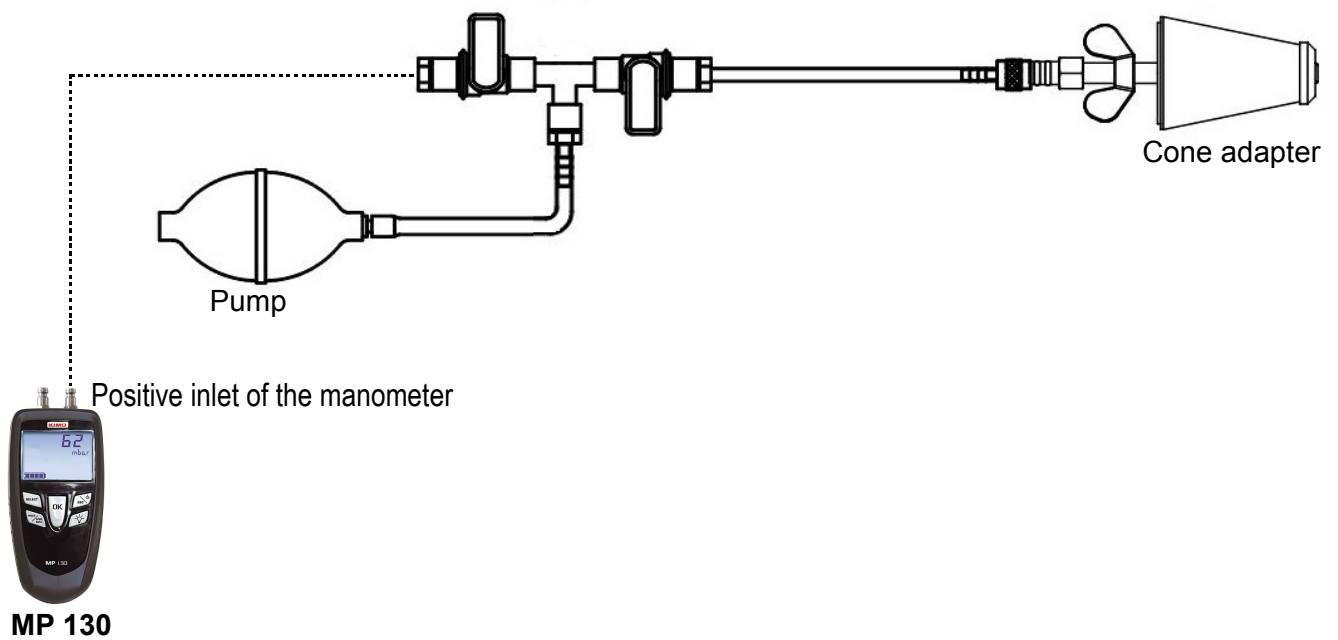
Functions available from main screen

Self-calibration	1x		→ Start self-calibration countdown*	
Select pressure unit	1x	→	→ Press to scroll down unit.	⇒ Validate with
Automatic shut-off	2x	→	→ Press to scroll down minutes.	⇒ Validate with
Beep	3x	→	→ Press to activate or deactivate	⇒ Validate with

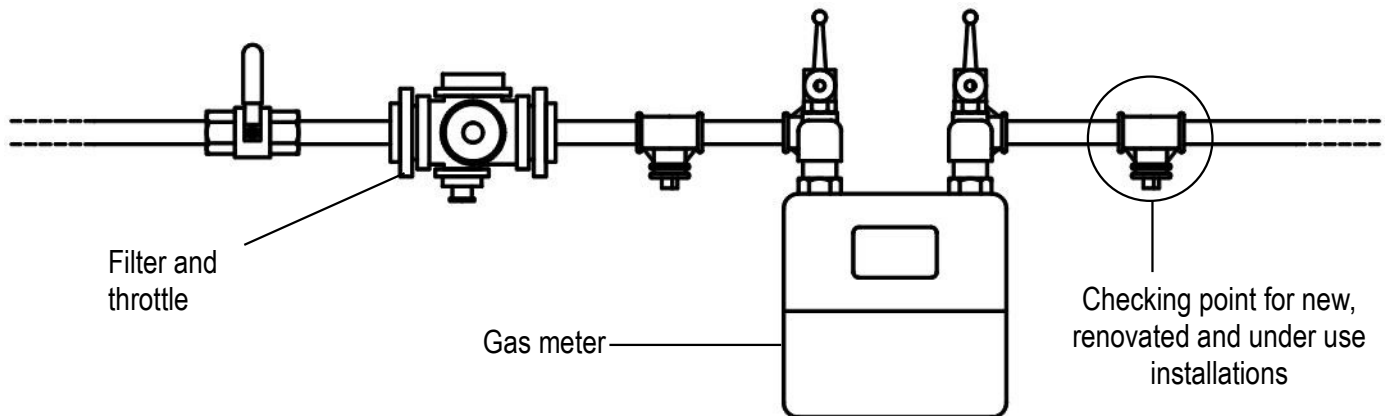
*Self-calibration is performed by disconnecting the two pressure inlets of the sensor, then by pressing **AutoZ** key.

■ Preliminary operations to use the MP130 manometer with its sealing kit

- Connect the cone adapter (the most suitable to the transversal section of the tube) to the male connector of the sealing kit, and the female connector to the positive inlet of the manometer, as below :



- Isolate the installation : close the tap of the counter and block the supplied connectors to the installation.



- Connect the cone adapter to the connector downstream the counter.
- Switch-on the manometer.
- Inject air or gas to test the installation at the good pressure :
 - when feeding with air, pressurize the system with the supplied pump ; once the desired pressure is reached, close the tap.
 - when using combustible or inert gases, close the tap and pressurize the system.

www.kimo.fr

EXPORT DEPARTMENT
Boulevard de Beaubourg - Emerainville - BP 48
77312 MARNE LA VALLEE CEDEX 2
Tel : + 33.1.60.06.69.25 - Fax : + 33.1.60.06.69.29

